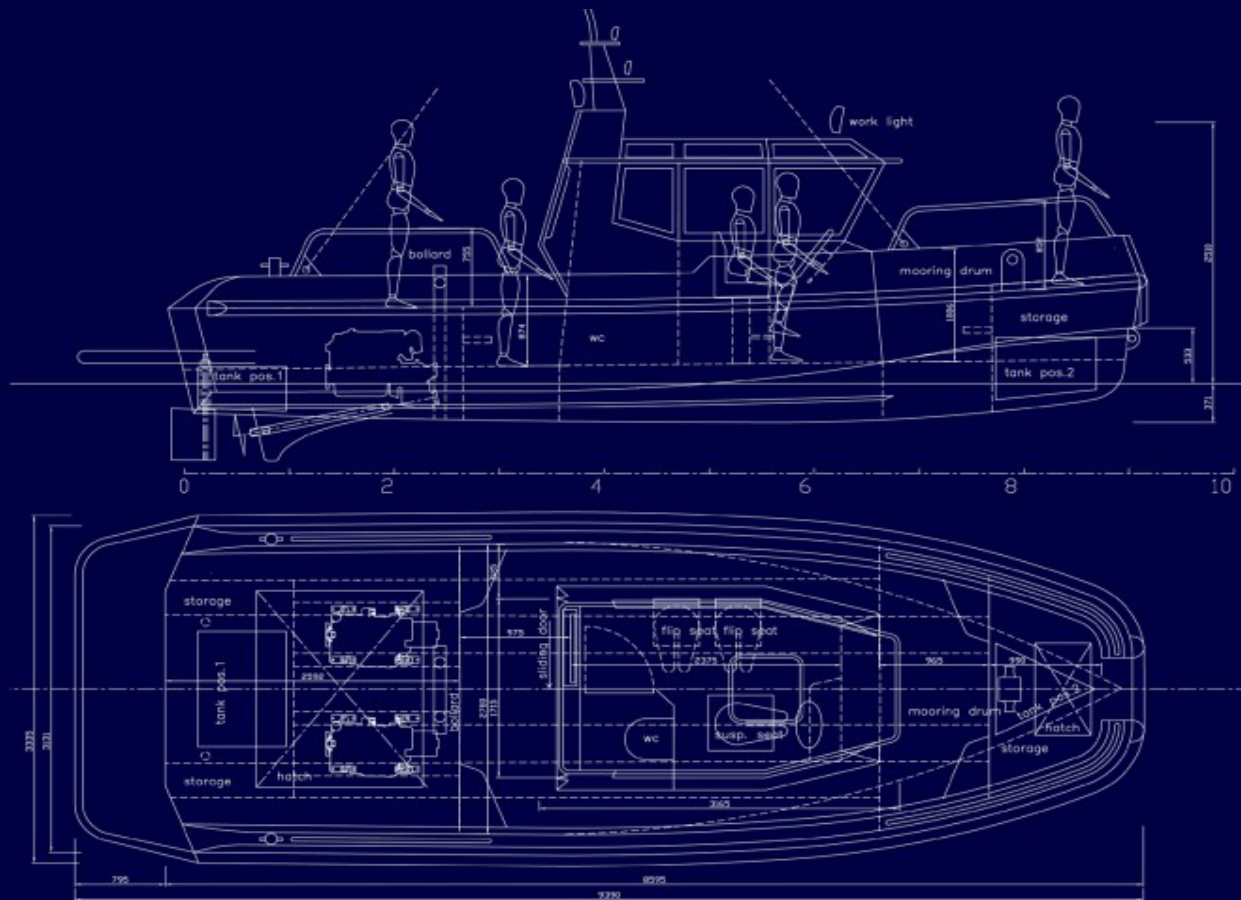


SPECIFICATIONS: PORTER 90

- Length overall 9.4 m / 30.84 ft
- Length hull 8.6 m / 28.22 ft
- Beam overall 3.4 m / 11.15 ft
- Beam mould 3.1 m / 10.17 ft
- Draft hull 0.45 m / 1.48 ft
- Displacement DWL 4.2 tons
- Speed design 18 knots
- Crew 3 persons
- Certification C
- Ref class notation Bureau Veritas I (iron cross) hull special service workboat coastal area
- Bollard pull 1.5 tons (twin 110 hp)



Built under license in the USA by SAFE Boats International, LLC